



Features:
Easy Data Transfer
Fast Results
Accurate

For single user / home use only

Important Safety and Product Information:

! Warnings: Failure to heed the warning below could result in an accident or medical event resulting in death or serious injury

The Tenovi Scale contains electrical equipment that could cause injury if not handled properly.

Always consult your physician before beginning or modifying any exercise program.

Do not allow children or pets to play with the Tenovi Wireless Scale.

Do not attempt to replace any parts or open the enclosure. Doing so will void the warranty.

Do not use abrasive cleaners to clean your product

Check the device before each use. Do not use the device if damaged. The continuous use of damaged unit may cause injury or improper results.

If the scale malfunctions, first check the batteries and replace if needed.

Handle with care. Never jump or stomp on the scale.

The scale is not waterproof, never immerse the scale in water.

To clean the surface, use a damp cloth or glass cleaner.

Do not use soap or other chemicals.

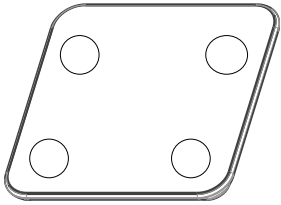
If the scale is malfunctioning or you have questions or concerns about the use of the scale please contact the **Tenovi Customer Support Team Mon-Fri, from 9 am to 5pm at 714-418-5658. Or email support@tenovi.com.**

Specifications:

1. LED display size: 2.6" x 1.2"
2. Product size: 11" x 11" x 0.9"
3. Unit conversion: KG/LB
4. Range: 6 Lbs -396 Lbs
5. Division value: 0.2 LB
6. Age: 10 years old or older
7. Height range: 39" - 86"
8. Working temperature / humidity: 50° F ~ 122°F
9. Battery installation: 3x 1.5 V AAA
10. Weight: 3.3 Lbs

Whats included?

1. Digital Scale



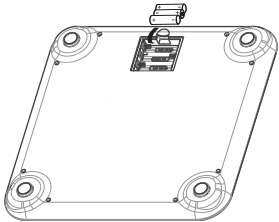
2. 3×AAA batteries



Getting Started

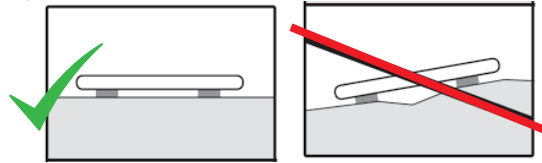
Step 1

Open the battery cover on the back of the unit and install the batteries by matching the correct polarity.



Step 2

Place the scale on a hard, even surface. Avoid using the device on carpet



Step 3

Step onto the scale with bare and dry feet. Remain still and wait for the scale to power on and take the measurement. When the measurement concludes, the results are shown on the display



Additional User Information

When using the Tenovi scale with the Tenovi Gateway, keep the scale within 15 feet of the Tenovi Gateway.

Contact Information

Please use the information below to contact Tenovi Health in the event of any device malfunction, complaint, return request or compliment!

Mailing Address:

Tenovi Health
18023 Sky Park Circle, Suite H2
Irvine, CA 92614

Phone Contact:

714-418-5658

Email Contact:

support@tenovi.com

www.tenovi.com